

Software Activation of Windows Clients

Content

[Activation](#)  2

[Test Version Validity Period](#)  4

[Software Activation](#)  5

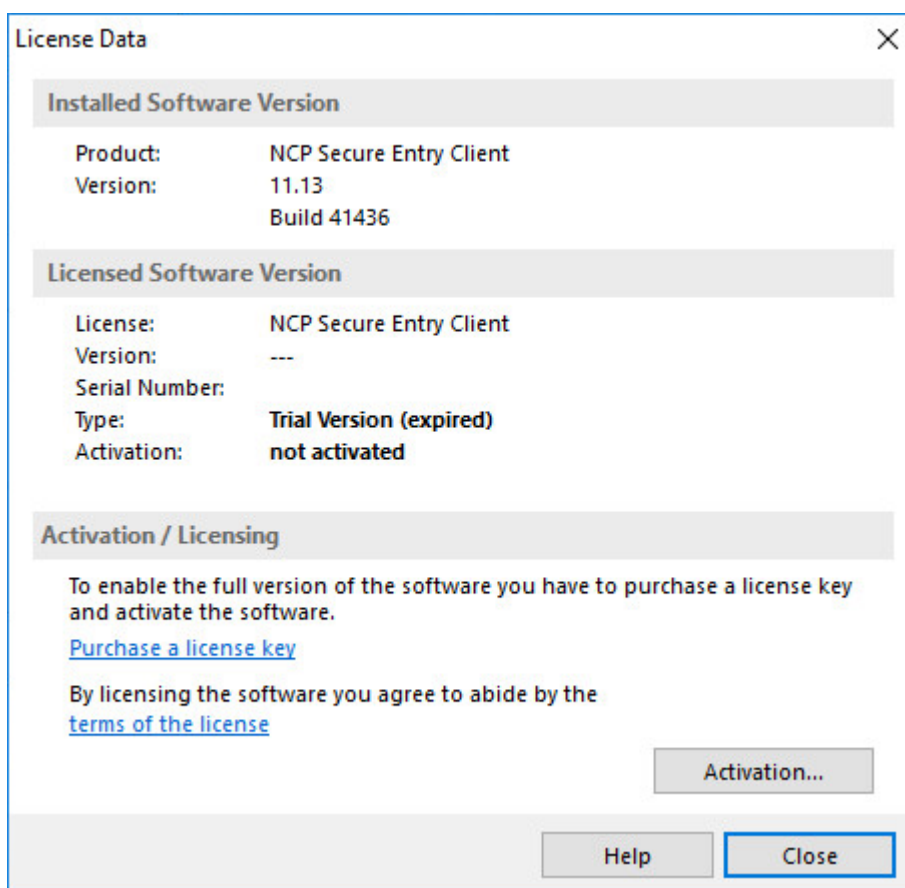
[Online Version](#)  7

[Offline Version](#)  10

[Search for Updates](#)

Activation

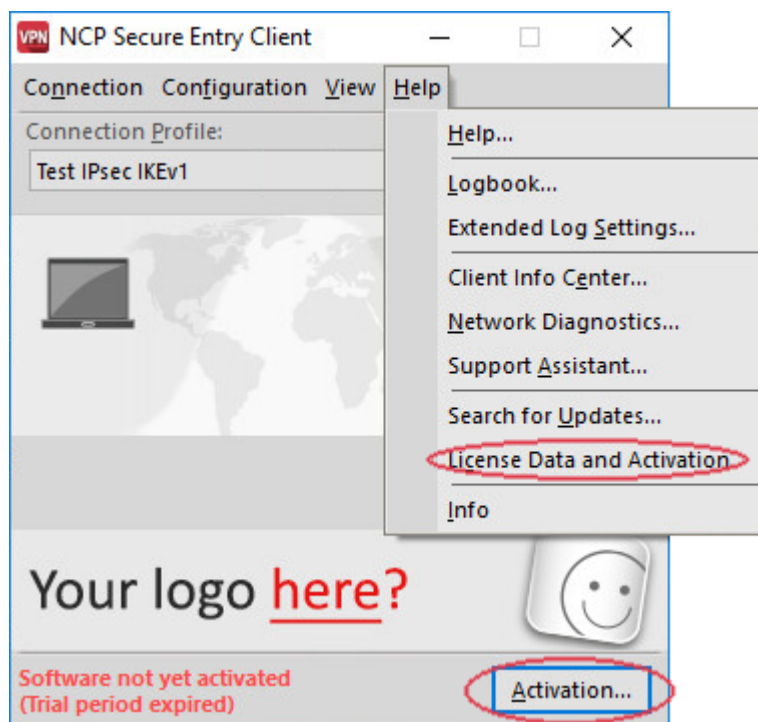
The activation dialog can be opened using the activation button in the message bar of the monitor, as well as using the monitor menu “Help / License Data and Activation”. It shows the software version, and possibly the licensed version with serial number.



The client software is always installed as a test version. If the client software has not yet been installed, or if there is a previously installed older version, which has not yet been activated. This also applies if an older version has already been licensed - then this older version will be reset to the status of a test version, and the license data must be re-entered within 30 days using the activation dialog.

The time remaining until software activation, i.e. the validity period of the test version, is displayed in the message bar of the monitor next to the activation button.

In order to use a full version with no time limitations the software must be released in the activation dialog with the license key and the serial number that you have received. With activation you accept the license conditions that you can view in the activation dialog after clicking on the appropriate button.



The activation dialog can be opened using the activation button in the message bar of the monitor, as well as using the monitor menu “Help / License Data and Activation” as shown above. The license data can be entered either online or offline using a wizard.

In the offline version, a file that is generated after entering the license key and serial number has to be sent to the NCP authentication server, and the activation key that will be displayed on the web site has to be recorded. This activation key can be entered in the licensing window of the Monitor menu at a later point in time.

In the online version, an assistant forwards the licensing data to the web server immediately after entry and in this way the software is released immediately.

Test Version Validity Period

The test version is valid for 30 days. Without software activation or licensing it will no longer be possible to setup a connection after this 30-day period expires.

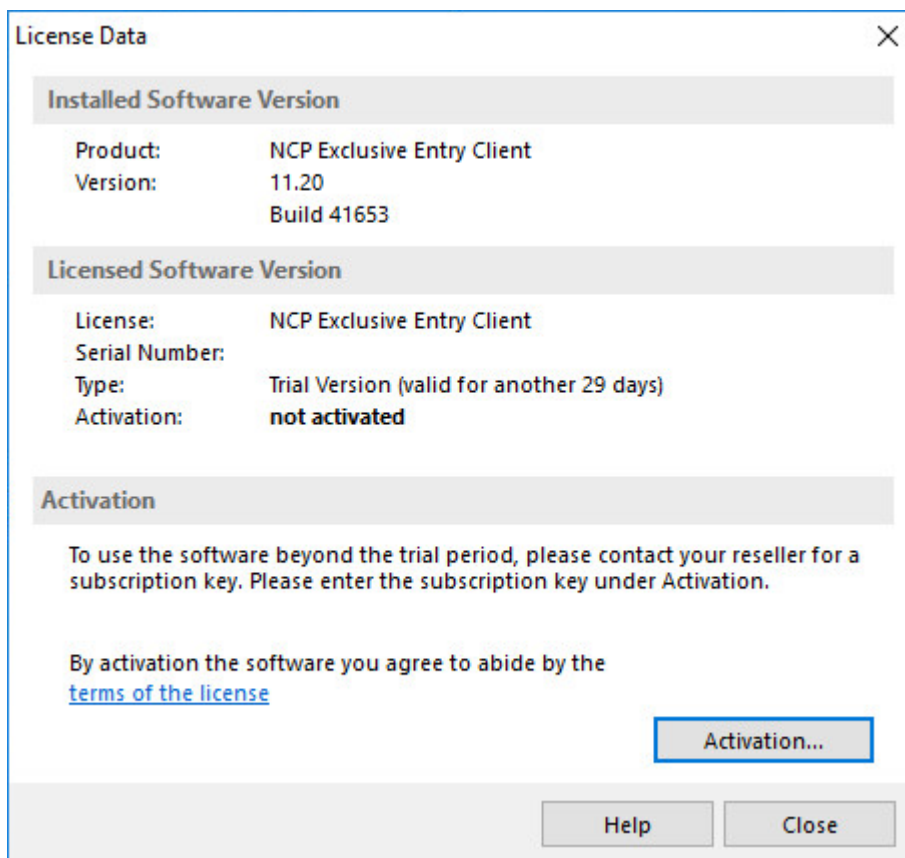
After installation, each time the software is started the validity period will be shown in the popup window. More over in a footer of the Monitor the system will display how long the test version can still be used, and when 10-days validity remain, a message box will be displayed to remind you that the software has not yet been licensed. This message box will appear once a day.

When the trial period has expired, only those connections can be setup with the Entry Client software that are used for software activation/licensing. Thus one of the profiles of the Entry Client can be used to set-up an Internet connection for licensing purposes. Or a connection to the NCP Secure Enterprise Management can be established in order to download a licensed version of the software.

Software Activation

When the test phase has expired the software must be either activated or de-installed. To activate, select the menu option “License data and activation” in the monitor menu “Help”.

Here you can see which software version you have and how the software is licensed, i.e. you can see that the test version has expired and that the software has not yet been activated/licensed.



Click on the license conditions to display the license agreement text. By activating/ licensing the software you accept the license conditions. Click on the “Activation” button to license the software. In the window that appears, select whether you wish to activate the client online or offline by selecting *Online Activation* or *Offline Activation*.

In the *offline* version, a file that is generated after entering the license key and serial number has to be sent to the NCP activation server, and the activation key that is then displayed on the web site has to be noted. In the online version, an assistant forwards the licensing data to the web server immediately after entry and in this way the software is released immediately.

Software Activation Wizard

Activation Mode
What kind of activation mode should be used?

NCP

Online Activation
During the online activation process, license data will be generated, submitted to and verified by an NCP Activation Server.
After a successful verification the NCP Secure Entry Client software is then enabled as a full version.

Offline Activation
The licensing information has to be entered, which is used to generate an activation data file (step 1) and then must be submitted (via the browser) to the NCP Activation Server.
The Activation Server will respond with an activation code which is required in step 2.
The activation code is needed to enable the full version.

< Back **Next >** Cancel


After selecting the type of activation the license data is to be entered in the appropriate fields. Click on "Next"!

Software Activation Wizard

License Data
Please insert license data

NCP

Please enter the following data for the NCP Secure Entry Client Software.

 License Key:
 - - - -

Serial Number:

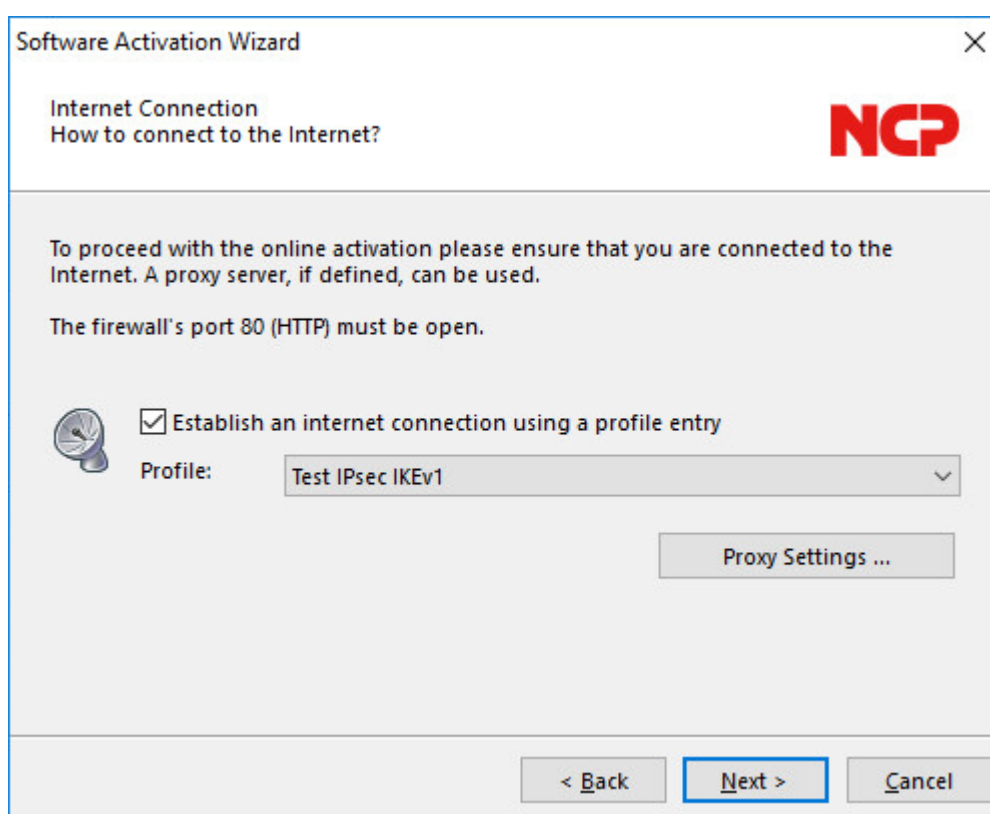
< Back Next > Cancel

Online Version

With the online version the license data will be transmitted to the NCP Activation Server via an Internet connection. This Internet connection can either be established via the Data Communications Dialer, via DSL, or via the Entry Client.

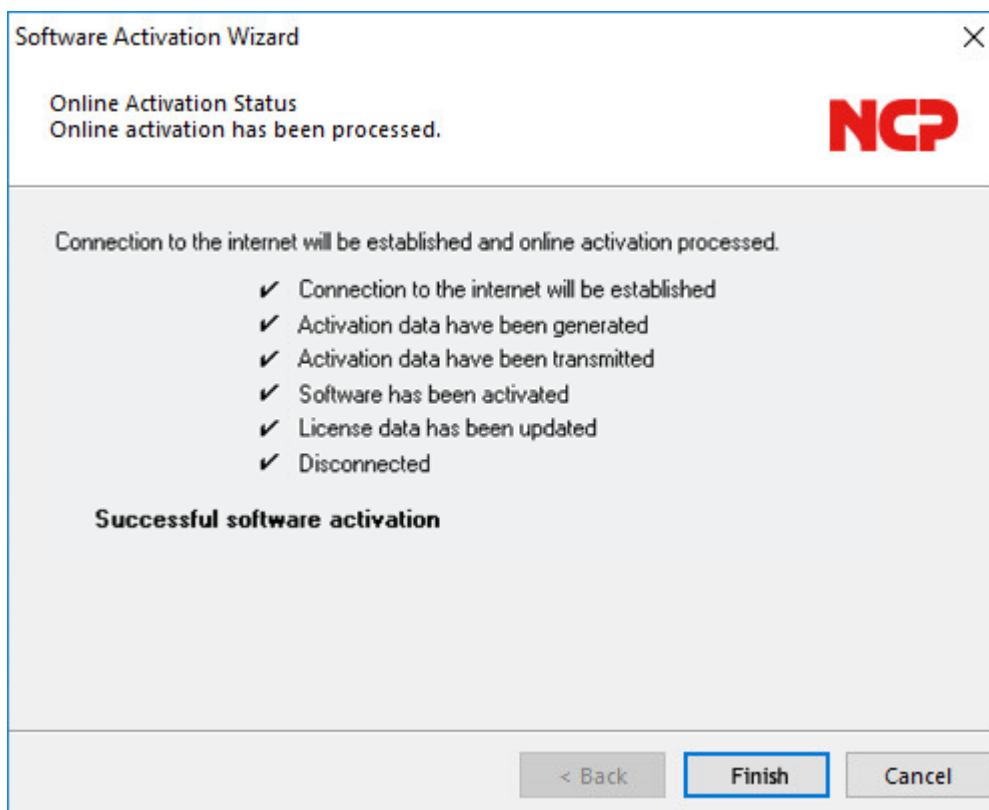
If the Internet connection is not set-up via the Entry Client, the connection must first be established in order to then start the activation assistant via the Monitor menu option, “Help / License data and activation”.

If the Entry Client is used to set-up the connection to the internet, a suitable profile must first be established for the Entry Client. Ensure that port 80 is released (for HTTP) if the firewall is activated. (If a proxy server has been configured in the operating system, then these settings can be transferred.) After the profile has been selected, click on “Next” to continue.



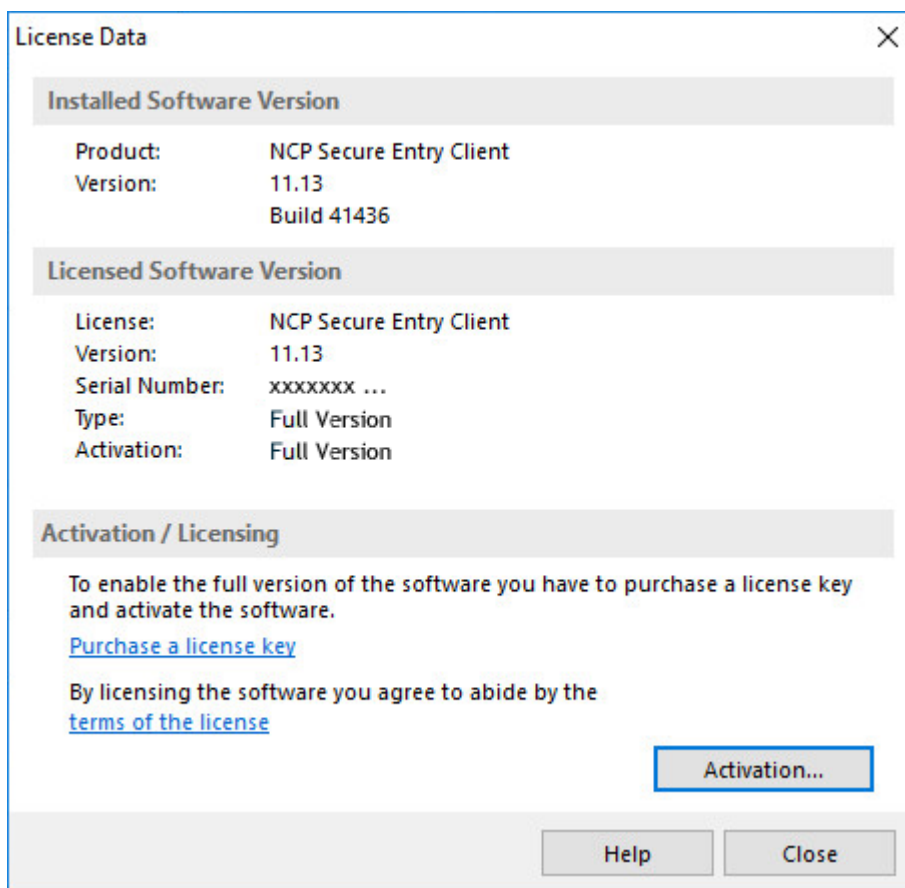
The internet connection via the Entry Client does not have to be set-up prior to activation. It is set-up automatically after the desired existing profile has been selected in the assistant for software activation, and after clicking on the “Next” button.

The software is activated automatically in the specified sequence.



As soon as the activation server detects that you are entitled to a newer software license and that the license key agrees with the installed software, then with online activation the new license key will be transferred automatically (license update), and in this way the new features of the software will be released. Please see the section [Updates](#) ¹⁵ at the end of this section for more information.

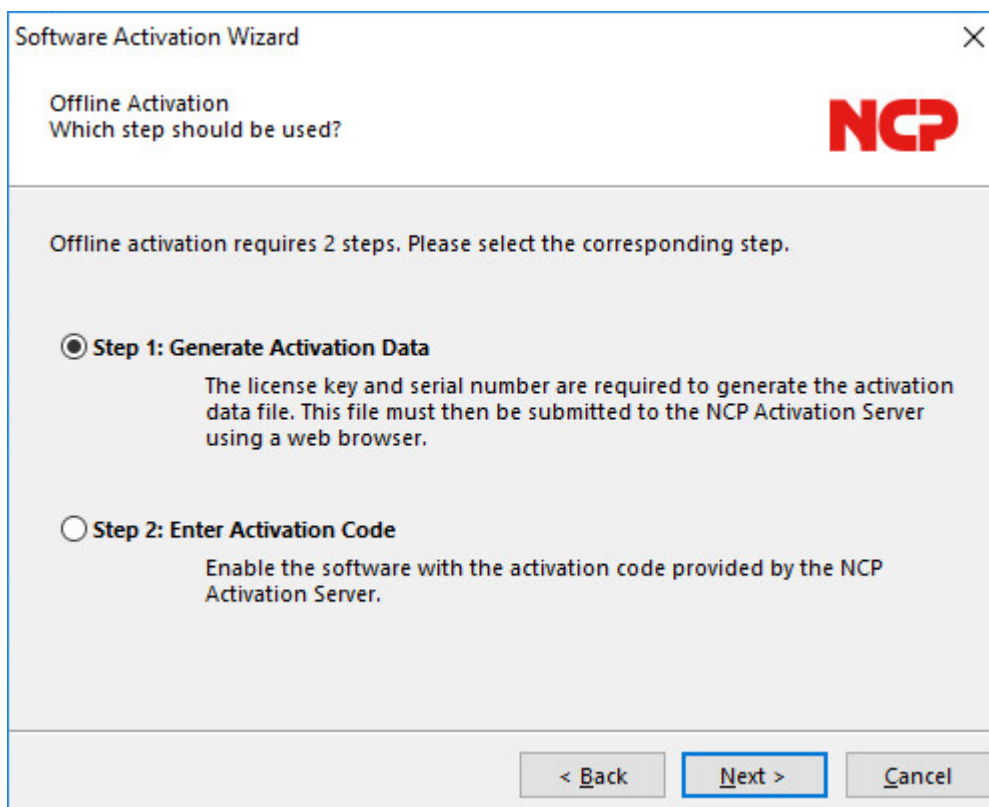
After concluding the activation process, in the window for the license data you can see that you now have a correctly activated full version.



The number of the software version and of the licensed version should not differ, if they do the license has to be updated with a newer license key. To do this click on the "Licensing" button. For more information see the description at the end of the *offline* version.

Offline Version

The *offline* version is executed in two steps. In the first step a file is generated after entering the license key and serial number, and is sent to the NCP Activation Server. An activation key will be shown on the web site, and you have to write down this number in order to enter the license key in the licensing window of the client menu in a second step. (This can also be executed at a later point in time.)



The offline version is initiated via the monitor menu “Help / License Data and Activation”, and this version can be selected in the first window of the activation wizard. Click on “Next”. In the second window of the activation wizard the two steps of the offline activation process are explained. The first step, creation of the activation file is selected automatically. Click on “Next” to continue. In the following window enter the license data and click on “Next”.

Software Activation Wizard

License Data
Please insert license data

Please enter the following data for the NCP Secure Entry Client Software.

License Key:
 - - - -

Serial Number:

< Back Next > Cancel

Enter name and path for the activation file. As default the installation directory of the software and the name ActiData.txt (with serial number) are used.

Software Activation Wizard

Activation File
Select target location of activation file.

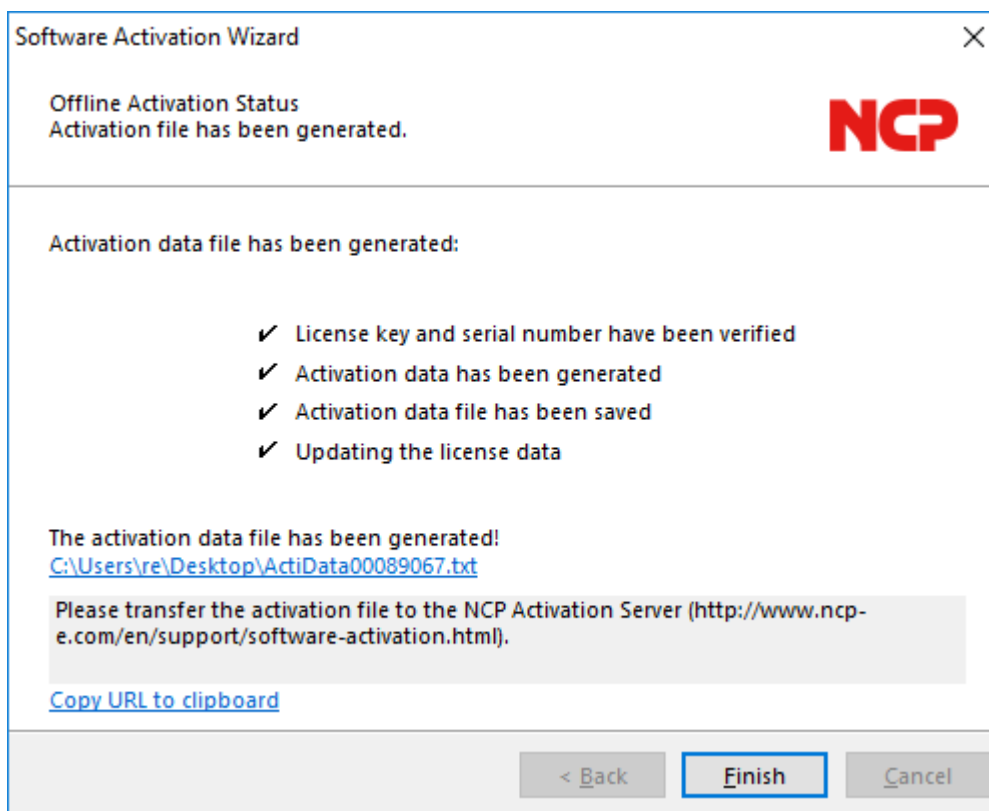
The activation data file has been generated. This file has to be submitted to the NCP Activation Server.
Please enter the path and name where the file should be stored.

Activation File:
 ...

< Back Next > Cancel

Now the activation file is created and this file has to be transferred to the Activation Server (fig. on the right). For this the NCP web site has to be opened:

<https://www.ncp-e.com/en/service/software-activation>

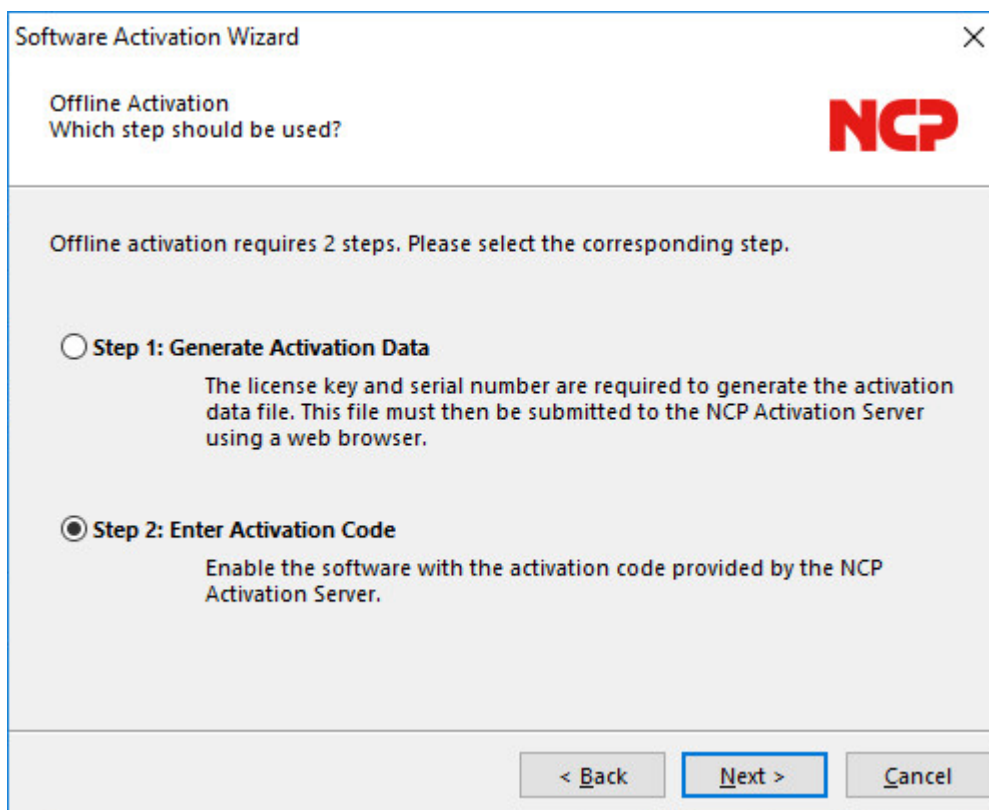


There are two ways to transfer the activation file to the Activation Server. Either copy the content of the activation file with Copy & Paste, after you into the window that is open on the web site, or click on the “Browse” button and select the activation file. Click on “Send”!

Then the activation code is generated and displayed on the web site. Write down the activation code and continue the activation process under the menu option “Help” / License data and activation”, by executing the second step of the activation in the offline version.

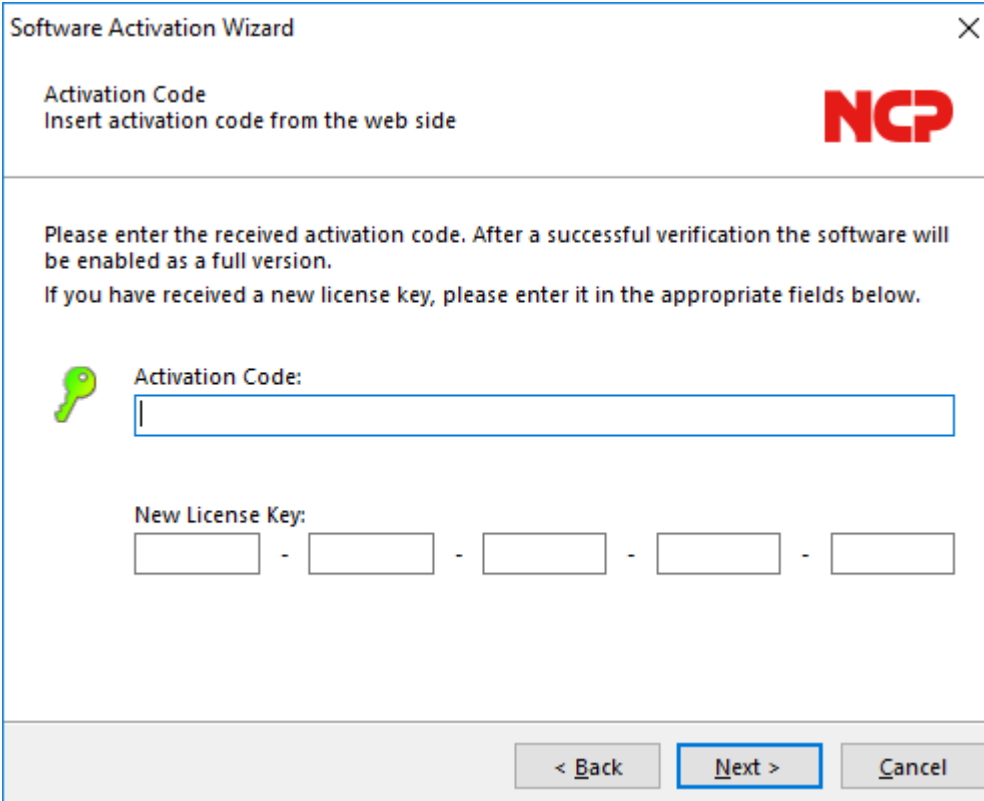
If the Activation Server detects that you are entitled to a newer software license and that the license key agrees with the installed software, then with the online activation the new license key will be displayed automatically. If you want to activate the new features then write down the new license key, conclude the activation process, and then use the new license key.

The second step of the offline version is triggered automatically via the monitor menu “Help / License data and activation”.



An activation wizard opens where you can enter the activation code. After you have entered the activation code click on “Next”.

If you have received a new license key from the Activation Server during the offline activation process (see above in the display of the activation code), then enter this license key for a license update, by clicking on the “Licensing” button.




Software Activation Wizard

Activation Code
Insert activation code from the web side

NCP

Please enter the received activation code. After a successful verification the software will be enabled as a full version.
If you have received a new license key, please enter it in the appropriate fields below.

 Activation Code:

New License Key:
 - - - -

< Back Next > Cancel

Click on “Next”. The license data will be checked and entered. Offline activation is completed with the following window.

After completing the activation you will see in the window with the license data that the number of the software version and the number of the licensed version now agree.

Search for Updates

Under the menu option “Search for Updates” in the menu under “Help” you can check whether a version of the software that is newer than the version you have installed is available at NCP. This is also possible if a test installation has been installed. If a newer version is available at NCP, then a software update is always possible.

The software update has to be purchased if the newer version is a major release, which is indicated by the change on the first decimal place. For example: If a version 11.26 is installed and the next software version has the number 11.3 then a software update from 11.26 to 11.3, as well as use of the new features, has to be purchased.

The new license key was activated as described above under software activation. The new license key is generated by entering the serial number and the update key that can be purchased locally from the reseller, on the following web site:

<https://www.ncp-e.com/en/service-resources/update-key/>

The software update always available free of charge if the newer version is a service release, which is indicated by the change of the second decimal place. The new features can be used without activation with 11.2x license key, as soon as the new software has been installed. A service release contains bug fixes, an extension of hardware support and compatibility extensions.

Software Updates

After you have selected the menu option “Search for Updates” the software update wizard opens, which helps you to search for available updates. You need an internet connection in order to do so. If the Entry Client is to be used to set-up the Internet connection, then ensure that port 80 (for HTTP) is released if the firewall is enabled.

If a proxy server is to be configured in the operating system, these settings can be transferred. If the proxy settings are correctly configured, click on “OK”. The wizard now searches for newly available software updates via the internet connection.

If a software update is available, it is displayed. (It may well be that the versions only differ in regard to the build number.) Click on “Next” if you want to use the more current version. This downloads the installation package for the latest software.

Click on “Finish” to end the Monitor and start the installation of the software update.

After starting the Install Shield Wizard select the installation language (as you would for the standard installation), and then confirm the update process with “Yes”. Then the installation will be executed automatically. It is concluded when you boot the computer.