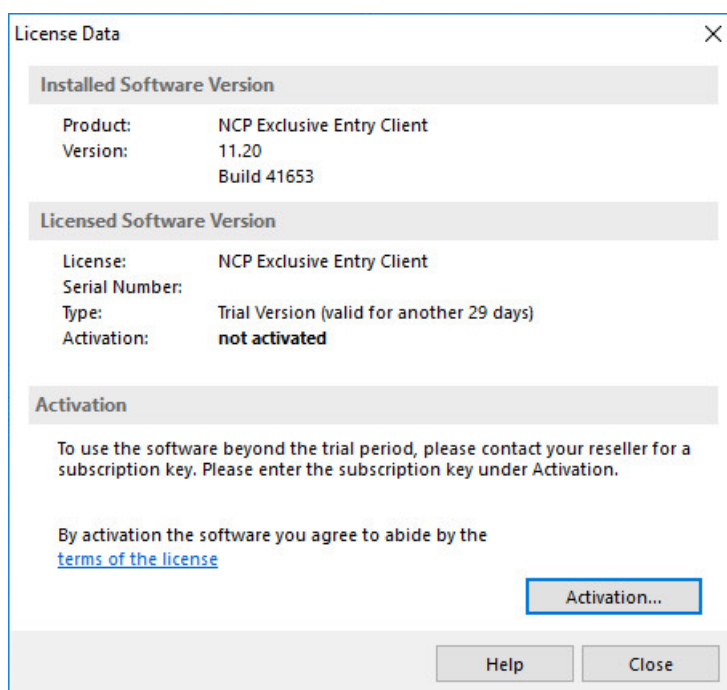


Activation for Juniper Entry

A subscription license for the NCP Exclusive Entry Client can be obtained from an NCP reseller for one, two or three years. The term starts in the client from the day the license is activated after entering the subscription key, consisting of the license key and serial number, which you received when you purchased this product.

To activate, select the menu item of the same name in the main menu "Help". This opens a window with the current license data.



The version of the product is displayed, operated in a non-activated trial version that is valid for a maximum of 30 days. To activate, click on the button of the same name.

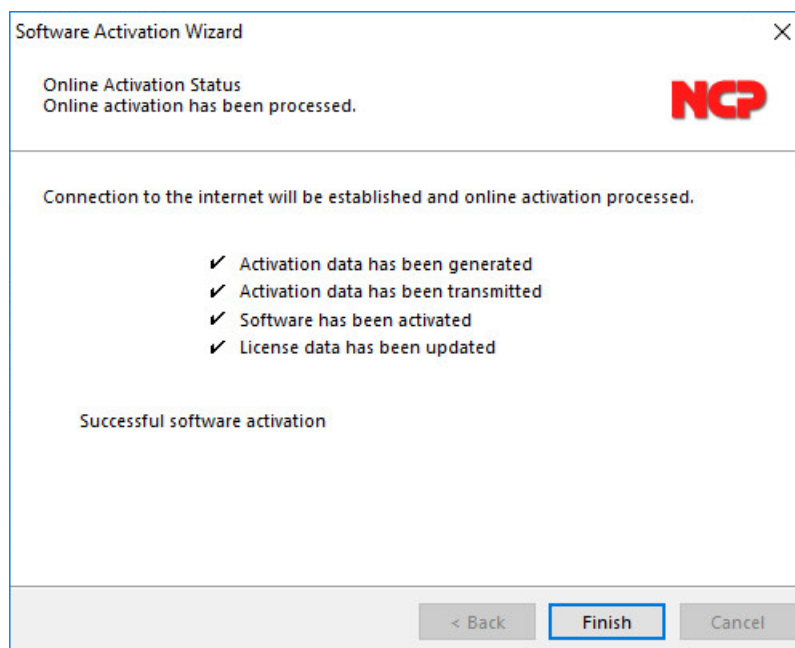
Now enter the subscription key consisting of license key and serial number.

After entering the license data, click on "Next" to determine the connection to the Internet.

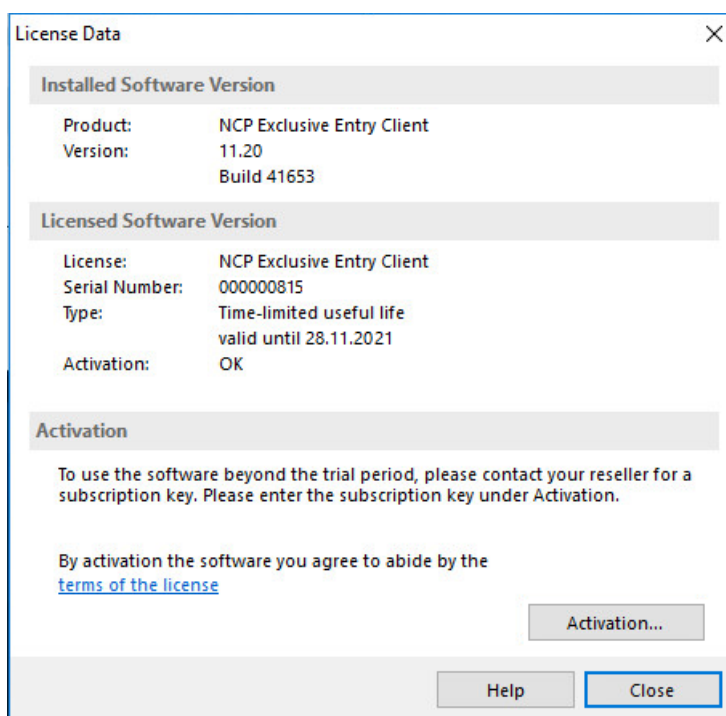
If you want to establish a connection to the Internet with the client software, you must first create a suitable profile that can be selected in the following window (fig. below). Make sure that the port 80 (for HTTP) is enabled when the firewall is activated. (If a proxy server is configured in the operating system, its settings can be applied after clicking on "Proxy Settings".) After the profile has been selected, click on "Next". The Internet connection will be established automatically after the desired profile (in figure below: Profile-1) has been selected.

Alternatively, the connection can also be established via the browser. Again, make sure that the proxy settings of the system are adopted.

After clicking on "Next", the software is activated in the order shown below.



By clicking on "Finish" the licensed software version with serial number and limited useful life of one, two or three years is displayed.



Sixty days before the expiration of the subscription, i.e. the limited useful life, you will be alerted at the bottom of the GUI by indicating the remaining days of use. Fourteen days before the subscription expires, these notes will be displayed in red. In addition, when the client is started, a Windows message appears above the tray icon.

Extension of the service life

To continue using the software for the remainder of the period, obtain an extension key from your reseller. If the serial number is the same, enter the new license key for additional one, two or three years in the manner described above.

Use on another computer

If the software with subscription license is to be used on a new computer, contact the NCP reseller or support.